

**Cardinal Building, Station Approach, Hayes, UB3**

Guide Price £325,000

2 2 1

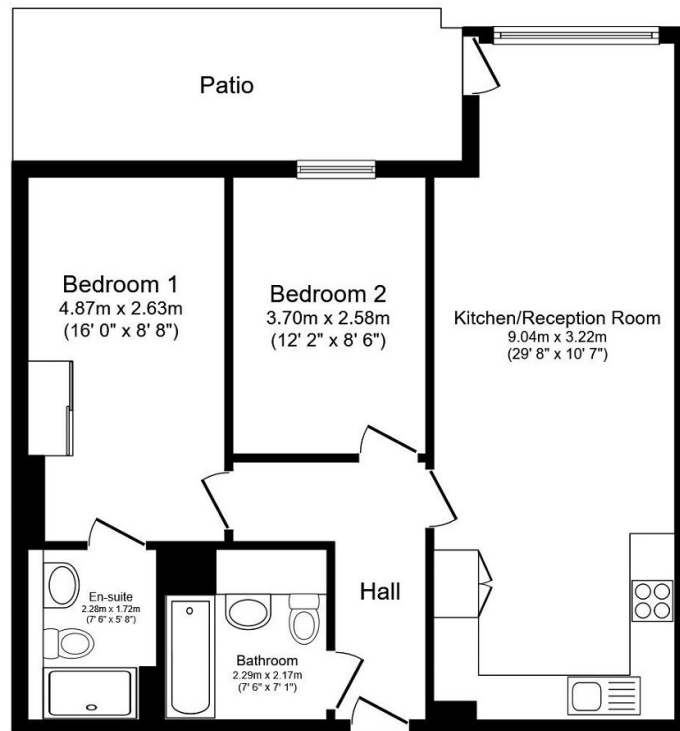


**TWO BEDROOM - TWO BATHROOM - 1ST FLOOR - EN SUITE - PRIVATE PATIO - ALLOCATED PARKING - 24HR CONCIERGE - GYM/SWIMMING POOL - LEASEHOLD - CHAIN FREE**

Henry Wiltshire are pleased to present this two bedroom two bath apartment located on the first floor in Navigation Building, High Point Village, Hayes. This property comprises of open plan living room and kitchen area, private patio overlooking the communal garden, double bedrooms with the master bedroom featuring an en suite. The property comes with allocated parking, access to residence only Gym facilities including swimming pool, sauna, steam room.

This property is person for a family, professional couples, and investors alike. Contact a member of staff now for more details

- Two Bedroom
- En Suite
- Private Patio
- 24hr Concierge
- Leasehold
- Two Bathroom
- First Floor
- Allocated Parking
- Gym Facilities including Swimming Pool
- Chain Free



This floor plan is for illustrative purposes only. It is not drawn to scale. Any measurements, floor areas (including any total floor area), openings and orientation are approximate. No details are guaranteed, they cannot be relied upon for any purpose and they do not form part of any agreement. No liability is taken for any error, omission or misstatement. A party must rely upon its own inspection(s). Powered by [www.focalagent.com](http://www.focalagent.com)